



COMMScope®

# NETCONNECT®

## Structured Cabling Solutions Guide

**INCRAM** MICRO®



# NETCONNECT® STRUCTURED CABLING SOLUTIONS GUIDE

## EXCEPTIONAL VALUE, PROVEN RELIABILITY FROM COMMSCOPE

You're not unrealistic. You're simply looking for a reliable and affordable structured cabling solution; a single portfolio that can support a variety of enterprise applications—in-building LAN and data center, outside plant and campus networks—both fiber and copper. You want hassle-free, and fast to deploy; something you can count on to support your network from day one and protect your IT investment well into the future. Say hello to NETCONNECT® from CommScope.

CommScope's NETCONNECT structured cabling portfolio continues to be a preferred solution for enterprises that need a reliable yet competitively priced infrastructure. With a complete range of copper and fiber solutions, NETCONNECT delivers proven performance across the enterprise. Designed for simplicity and engineered for flexibility, it meets your physical layer needs today and in the future.

Add CommScope's global research and manufacturing capabilities, product development support and 25-year warranty, and you've got everything you need to grow with confidence.

## Ten reasons to choose NETCONNECT®

1. One copper/fiber portfolio for all your structured cabling enterprise LAN, data center and campus applications
2. Optimized performance through ongoing third-party testing of copper solutions
3. WebTrak® tracks cables through the manufacturing process and provides online access to test reports to verify performance
4. NETCONNECT 25-year Solutions Warranty
5. Global support with NETCONNECT-certified installation companies, plus CommScope technical and field sales experts
6. Certified NETCONNECT installer training ensures structured cabling is always properly installed
7. Global R&D effort with more than 10,000 patents and patent applications
8. Superior, consistent cable terminations with the SL-installation tool
9. Multiple RJ45 jack options accommodate M-series, SL and keystone faceplates
10. Significant stock available from authorized NETCONNECT distributors

# NETCONNECT® COPPER SOLUTIONS

The NETCONNECT family of copper products includes twisted-pair cabling and patch cords, panels, jacks and accessories for your Category 6A, Category 6 and Category 5e channels.

From the data center to in-building connectivity, NETCONNECT Category 6A solutions satisfy a growing list of network applications, including Wi-Fi, Power over Ethernet and 10GBASE-T. All NETCONNECT Category 6A solutions are available in U/UTP and F/UTP options and comply with the relevant ISO/IEC 11801 standards. Category 7A and Category 7 cable is also available.

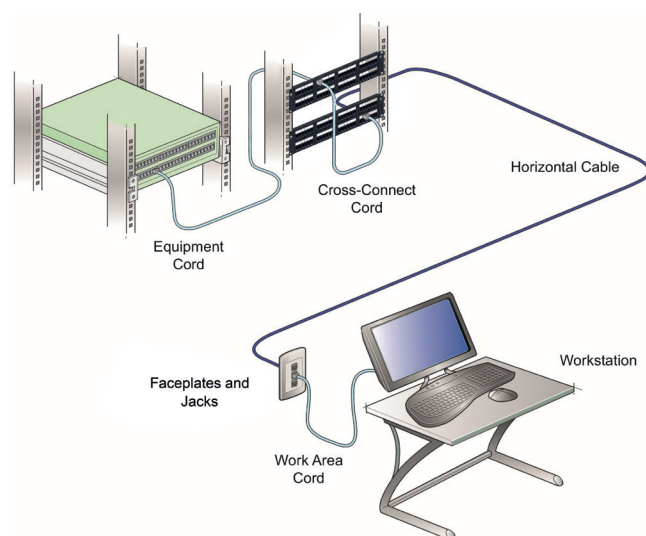
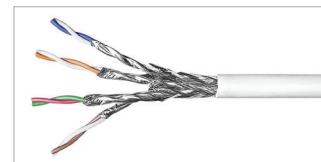


Figure 1. Typical horizontal channel design

## Category 6A

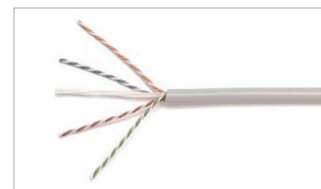
### CS67 AND CS54 CABLE:

CommScope offers Category 7A S/FTP (CS67) and Category 7 S/FTP and F/FTP (CS54) cables; both of which can be deployed as part of a Category 6A compliant channel with the appropriate NETCONNECT jacks and patch-cords. These cables are available with LSZH sheaths in several CPR Euroclasses.



### CS44 CABLE:

CommScope's CS44Z, CS44R and CS44P Category 6A cables are guaranteed to meet Category 6A specifications. Cables are available in different jacket types: LSZH, Riser and Plenum in unshielded twisted-pair (U/UTP) or foil-shielded twisted-pair constructions. They are also available in a number of CPR Euroclasses. Foil shield pair cable is available on reels, while U/UTP cable is also available in convenient, easy-to-store CommPak boxes.



### PATCH PANELS:

Category 6A patch panels are available in unshielded and shielded options, as well as flat and angled designs. Unshielded panels are available either equipped with distribution modules or in the discrete distribution module design, which accepts jacks ordered separately. Shielded panels are available only in the discrete distribution module design, with jacks ordered separately.



# NETCONNECT® COPPER SOLUTIONS

---

## Category 6A

### JACKS:

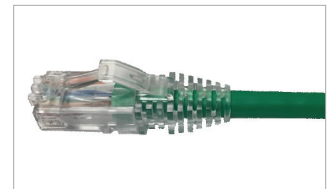
The SLX shielded jack builds on the industry leading features of the existing AMP-TWIST shielded SL jacks. Support for a wide range of color options and built-in support for dust covers. Termination is done via the existing SL termination tool with Direct Screen Termination support making screen termination simple and secure.

The SLX Cat 6A jack has been externally verified to meet Category 6A component compliance ISO/IEC 11801-1 Ed.1.0 (2017-11). The SL-style unshielded jack is also built on SL-technology and termination methods, and is available in a range of colors, with or without dust covers.



### PATCH CORDS:

NETCONNECT Category 6A patch cords deliver superior electrical performance. Available in shielded and unshielded options, they utilize transparent, flexible slim-line boots providing for high density switch applications and accept the CommScope line of color clips to assist in circuit identification and patch cord management.





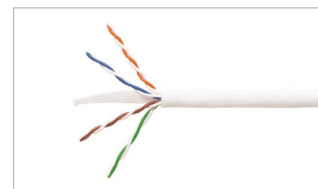
# NETCONNECT® COPPER SOLUTIONS

---

## Category 6

### CS34 CABLE:

CommScope's CS34Z, CS34R and CS34P Category 6 cables are guaranteed to meet Category 6 specifications. Cables are available in different jacket types: LSZH, Riser and Plenum, in unshielded twisted-pair (U/UTP) or foil-shielded twisted-pair constructions. They are available in a number of CPR Euroclasses. Shielded Category 6 cable is available on reels, while U/UTP cable is also available in convenient, easy-to-store CommPak boxes.



### PATCH PANELS:

Category 6 patch panels are available in unshielded and shielded options, as well as flat and angled designs. Unshielded panels are available either equipped with distribution modules or in the discrete distribution module design, which accepts jacks ordered separately. Shielded panels are available only in the discrete distribution module design, with jacks ordered separately.



### JACKS:

The SLX shielded jack builds on the industry leading features of the existing AMP-TWIST shielded SL jacks. Support for a wide range of color options and built-in support for dust covers. Termination is done via the existing SL termination tool with Direct Screen Termination support making screen termination simple and secure.

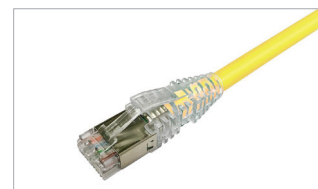


The SLX Cat 6 jack has been externally verified to meet Category 6 component compliance ISO/IEC 11801-1 Ed.1.0 (2017-11). Unshielded jacks are available for SL and Keystone faceplates. Both are built on SL-technology and termination methods, and are available in a range of colors.



### PATCH CORDS:

NETCONNECT Category 6 patch cords deliver superior electrical performance. Available in shielded and unshielded options, they utilize transparent, flexible slim-line boots providing for high density switch applications and accept the CommScope line of color clips to assist in circuit identification and patch cord management.



# NETCONNECT® FIBER SOLUTIONS

---

With OM4 and OM3 multimode and OS2 singlemode options, NETCONNECT fiber solutions support applications ranging from campus and outside plant installations to data centers, buildings and fiber to the desktop. Modular connectivity components—including fiber enclosures and patch panels, pre-terminated cassettes, modules and adapters—enable you to deploy quickly and migrate easily as your needs grow.

## DISTRIBUTION CABLE AND MPO FIBER CABLE ASSEMBLIES

NETCONNECT fiber cabling includes TeraSPEED® and LazrSPEED® 550 and 300 ruggedized fanout and distribution cables. MPO trunk cabling is available with LazrSPEED OM4 and TeraSPEED OS2 fiber and supports Method B polarity. Multiple fiber types and constructions make it suitable for a broad range of environments: OSP direct buried, duct and aerial, indoor/outdoor and indoor-only. The NETCONNECT fiber portfolio also includes a variety of termination options, from traditional field termination to fusion splicing and tool-less termination with CommScope's Qwik II connector technology.



## WALL-MOUNT FIBER ENCLOSURES

The WBE-EMT is a wall-mount fiber enclosure that handles splicing and termination of in-building fiber cable or outside plant cable. The enclosure can be configured for multiple adapter applications and is designed to accommodate the termination of up to 96 LC connections. By adding the appropriate splice holders, the enclosures can also house up to 96 single fusion splices, 72 mechanical splices or 36 mass fusion splices.



## STANDARD-DENSITY FIBER PATCH PANELS

Standard-density (SD) fiber patch panels support LazrSPEED OM3 and OM4 multimode, and TeraSPEED singlemode fiber. Use it for expanding telecommunication closets to risers, in small data centers, intelligent building connectivity, education and government structures, and more. Available in 1U, 2U and 4U configurations, it holds three splice cassettes or preterminated modules—or 36 duplex LC (72 fibers) or 24 MPO pass-through adapters (288 fibers)—in each 1U of rack space. Completely modular for easy deployment and upgrades, it's a future-ready platform for all your fiber needs.



# NETCONNECT® FIBER SOLUTIONS

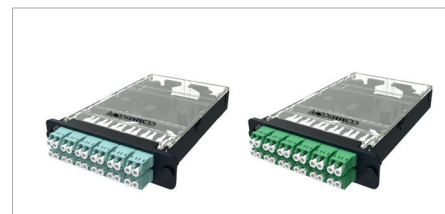
## FIBER MODULES

The corresponding modules for the standard-density fiber panel feature a 1000-style footprint and are available with one or two 12-fiber MPO connections on the back. ReadyPATCH® fiber modules also support preterminated MPO trunk cables for rapid deployment in the data center. All fiber modules are factory tested and ready for installation.



## FIBER SPLICE CASSETTES

Fiber splicing cassettes feature pre-installed fiber pigtails and support fusion splicing within the cassette. Select from LazrSPEED OM4 and TeraSPEED OS2 fiber, as well as LC, LC/APC, SC and SC/APC connectors.



## FIBER ADAPTER PACKS

Fiber adapter packs are available to accept LazrSPEED OM3 and OM4 and TeraSPEED OS2 fiber and support LC, keyed LC, LC/APC, SC and SC/APC connectors.

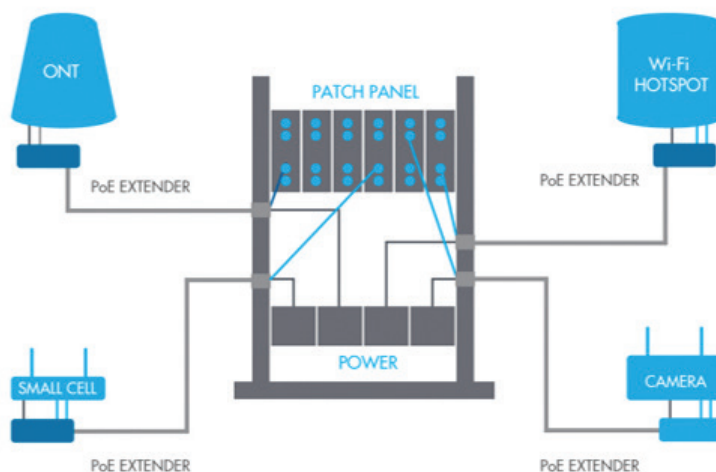


## POWERED FIBER CABLE SYSTEM (PFCS)

CommScope's Powered Fiber Cable System (PFCS) distributes power and fiber within the same cable, simplifying the addition of new small cells, Wi-Fi access points and IP cameras. In doing so, it can deliver low voltage power from a centralized source without the need of installing extra conduits, transformers or remote uninterrupted power supplies (UPS).

The Powered Fiber Cable System is comprised of hybrid cables and PoE Extenders, along with power transmission management, safety and overload protection as well as a universal power supply (PSU).

For more information on the Powered Fiber Cable System, please refer to the [PFCS solutions guide](#).



# Complete confidence, end to end

The NETCONNECT® solutions portfolio offers a full range of copper and fiber cable and connectivity, all designed for the superior mating and reliable performance your system needs. Working together across your entire network, NETCONNECT solutions provide a complete infrastructure platform—copper to fiber, outside to inside, backbone to the desktop.

And, with CommScope's Certified Installer Program, installation is handled by trained experts with demonstrated proficiency in areas such as industry codes and standards, infrastructure design, terminations, splicing, testing and troubleshooting. So you know it's done right.

Complete, compatible solutions from a single trusted source: That's NETCONNECT from CommScope.

## Driven. Dynamic. Dedicated.

Our 40 years of proven experience testifies to our ability to anticipate any need, solve any challenge and pursue any opportunity. With a history of results and a focus on tomorrow, CommScope is the premier choice for smarter and faster performance. With each new improvement to your network infrastructure, we are readying you for the future. To learn more, contact your CommScope account executive or visit [www.commscope.com](http://www.commscope.com).

Let's get started.

## 25-year warranty

CommScope stands behind our NETCONNECT solutions with a 25-year warranty for both performance and reliability. We guarantee all NETCONNECT solutions products are free from material and workmanship defects, and that a properly designed, installed, tested and registered structured cabling system will support any application designed to communicate via media specified by ANSI/TIA 568-C series standards. This warranty applies to NETCONNECT solutions installed in structured cabling systems and that have been installed and maintained by a NETCONNECT certified installer.

CommScope pushes the boundaries of communications technology with game-changing ideas and ground-breaking discoveries that spark profound human achievement. We collaborate with our customers and partners to design, create and build the world's most advanced networks. It is our passion and commitment to identify the next opportunity and realize a better tomorrow. Discover more at [commscope.com](http://commscope.com)

# COMMSCOPE®

[commscope.com](http://commscope.com)

Visit our website or contact your local CommScope representative for more information.

© 2018 CommScope, Inc. All rights reserved.

Unless otherwise noted, all trademarks identified by ® or ™ are registered trademarks, respectively, of CommScope, Inc. This document is for planning purposes only and is not intended to modify or supplement any specifications or warranties relating to CommScope products or services. CommScope is committed to the highest standards of business integrity and environmental sustainability with a number of CommScope's facilities across the globe certified in accordance with international standards, including ISO 9001, TL 9000, and ISO 14001. Further information regarding CommScope's commitment can be found at [www.commscope.com/About-Us/Corporate-Responsibility-and-Sustainability](http://www.commscope.com/About-Us/Corporate-Responsibility-and-Sustainability).

BR-112972-EN (10/18)